



Ropeless Gear System

Making fishing operations data-driven by tracking, scheduling, and monitoring of gear — all while reducing risk of marine entanglements.

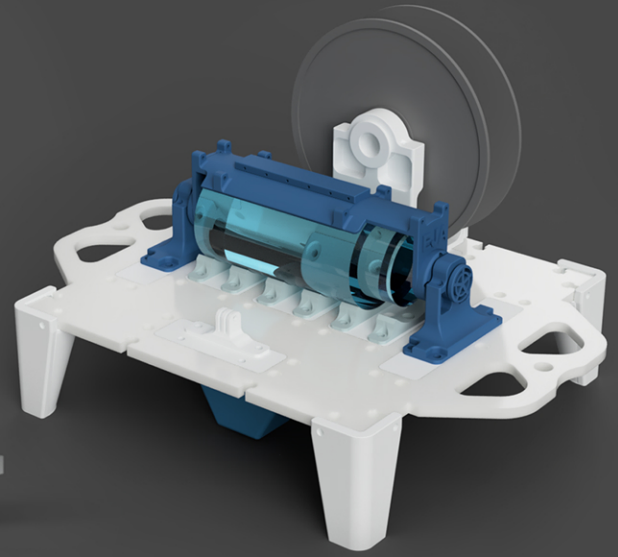
Onboard Gateway



Intelligent Buoy



Release Mechanism



Applications

- Gear location tracking for fishers
- Ropeless gear fishing for fishing industry
- Underwater fish traffic monitoring for fishers and research
- Illumination source to do bycatch reduction for fishers and researchers
- Environmental sensor readings for research
- Sub-surface timed water samples for research, city municipalities, government, insurance and inspectors
- Citizen scientists to perform specialized local experiments and research
- Education to build a low-cost waterproof IoT device and learn engineering & design



Functional Real-World Test Prototype